

以心换新 力无止境

USE OUR HEARTS TO GAIN NEW IDEA, THERE WILL BE ENDLESS OF POWER

起重特性表

RATED LIFTING CAPACITY TABLE

单位(UNIT): kg

工作幅度 WORKING RADIUS(m)	主 臂 BOOM					主 臂 仰 角 WORKING RADIUS(°)	主臂+副臂 BOOM+JIB	
	支腿全伸、后方、侧方作业 REAR & SIDE WORKING AREA WITH OUTRIGGER FULLY EXTENDED						24+7 m	
	臂 长 BOOM LENGTH						副臂安装角度 JIB OFFSET	副臂安装角度 JIB OFFSET
	9.70m	13.3m	16.85m	20.4m	24.0m		0°	30°
3.0	16000	13500				80	2000	1860
3.5	16000	13500	12000	9000		78	2000	1810
4.0	16000	13500	12000	9000		76	2000	1750
4.5	15000	13500	11800	9000	6500	74	2000	1700
5.0	14200	13000	11000	9000	6500	72	2000	1650
5.5	13600	12500	10500	7850	6300	70	2000	1610
6.0	12000	11700	10000	7350	6100	68	2000	1570
6.5	10000	10300	9750	6900	6000	66	2000	1520
7.0	9000	8900	8650	6500	5500	64	2000	1500
8.0	7000	7000	7050	5750	5250	62	2000	1480
9.0		5600	5700	5100	4700	60	2000	1450
10.0		4700	4750	4600	4250	58	2000	1430
11.0		3900	4000	4050	3850	56	1840	1410
12.0		3300	3450	3500	3500	54	1680	1400
13.0			2950	3000	3050	52	1530	1350
14.0			2550	2650	2700	50	1400	1250
15.0			2250	2300	2350	45	1130	1030
16.0				2050	2100	40	940	870
17.0				1800	1850	35	790	750
18.0				1600	1650	30	680	640
19.0				1400	1450	25	580	570
20.0				1300		20	510	510

说明:

- 表中粗线以上数值为起重机强度所决定,粗线以下为起重机整机稳定性所决定;表中所列数值为最大允许值,任何情况下不允许超过此值;
- 不允许在不打支腿的情况下吊重,表中所给起重重量是在地面坚实、整机调平的情况下的起重重量;
- 表中所给工作幅度,是指吊载后吊钩中心到回转中心的水平距离;
- 表中额定起重重量包括吊钩重量(主吊钩重210kg,副吊钩重42kg);

NOTE:

- Capacity above the thick line in the table are based on strength of the boom, the others, on stability of the crane. Figures listed in the table are all maximum permissible values. Do not exceed them.
- Lifting without outriggers is not permissible. Capacity listed in the table is on the condition that crane is levelled on a firm ground.
- A working radius in the table is a horizontal distance from the centerline of the hookblock to the axis of the slewing ring when a load is lifted.
- Capacities given in the table include the weight of the hookblocks (210kg main hookblock and 42kg auxiliary hookblock).

中联重科浦沅分公司

地址:湖南省长沙市芙蓉中路三段613号
电话:0731-5667210
传真:0731-5582657
邮编:410007
网址:www.puyuan.com.cn

PUYUAN SUB-COMPANY OF ZOOMLION

HOLDING GROUP

ADD: NO.613 THE 3TH DISTRICT FURONG MIDDLE ROAD,
CHANGSHA, HUNAN
TEL: 0731-5667210
FAX: 0731-5582657
PC: 410007
HTTP://WWW.PUYUAN.COM.CN

营销部

销售热线:0731-5667230 5311766
服务热线:0731-5667004 8008786119
备件服务热线:0731-5667276
传真:0731-5585850
E-mail:sales@puyuan.com.cn

SALES DEPARTMENT

TEL:0731-5667230 5311766
SERVICE TEL:0731-5667004
SPARE PARTS SALE:8008786119 0731-5667276
FAX:0731-5585850
E-mail:sales@puyuan.com.cn

浦沅进出口有限公司

总部电话:0731-5667238
传真:0731-5591796
E-mail:pyiec@public.cs.hn.cn

CHANGSHA PUYUAN IMP. & EXP. CO., LTD.

HEAD OFFICE: 0731-5667238
FAX: 0731-5591796
E-mail: export@puyuan.com.cn

2006年1月版

PUYUAN

■ 全液压汽车起重机

Full Hydraulic Truck Crane

■ QY16C-7

QY16C-8

QY16C-9



注意: 样本所载的图片和技术参数, 由于设计上改进等原因, 有可能与用户交货产品不符, 请予理解, 恕不另行通知。
NOTICE: PICTURES AND TECHNICAL DATA SUBJECT TO CHANGE WITHOUT NOTICE FOR IMPROVEMENT.

QY16C



主要特点 MAIN FEATURES

浦沅牌QY16C型汽车起重机是全回转伸缩臂式液压汽车起重机，主要有QY16C-7 (ZLJ5210JQZ16G, 双卷扬)、QY16C-8 (ZLJ5210JQZ16C, 单卷扬)、QY16C-9 (ZLJ5210JQZ16, 双卷扬) 三个产品，最大额定起重量16吨，广泛适用于工矿企业、建筑工地、车站、港口等进行各种起重作业。

PUYUAN QY16C truck crane is a type of hydraulic truck crane with full-slewing telescoping boom. It has QY16C-7(ZLJ5210JQZ16G), QY16C-8(ZLJ5210JQZ16C) and QY16C-9(ZLJ5210JQZ16) three main products. The Max. lifting capacity is 16t. It is widely used in factories, construction sites, stations, docks for various lifting work.

采用自制汽车起重机专用底盘，D6114环保发动机，驾驶室为左侧半置式，视野开阔，座椅乘坐舒适。采用液动力转向，具有操作轻便、灵活、工作平衡可靠的特点，能实现无级调速。

It adopts the self-made special chassis with D6114 environment-friendly engine. The driver's cab which is left semi-mount type with wide vision and comfortable seat. Hydraulically powered steering makes operation convenient, manoeuvrable stable and reliable and realize stepless speed.

起升机构采用单卷扬或双卷扬起升机构，配有主臂臂端滑轮，可提高作业效率；

The crane adopts the one or double winch hoisting mechanism. It is also equipped with the boom nose sheave to achieve the high work efficiency.

吊臂、支腿等主要结构件采用高强度钢制成，坚固耐用。三节六边形吊臂同步伸臂，操作方便，受力合理。

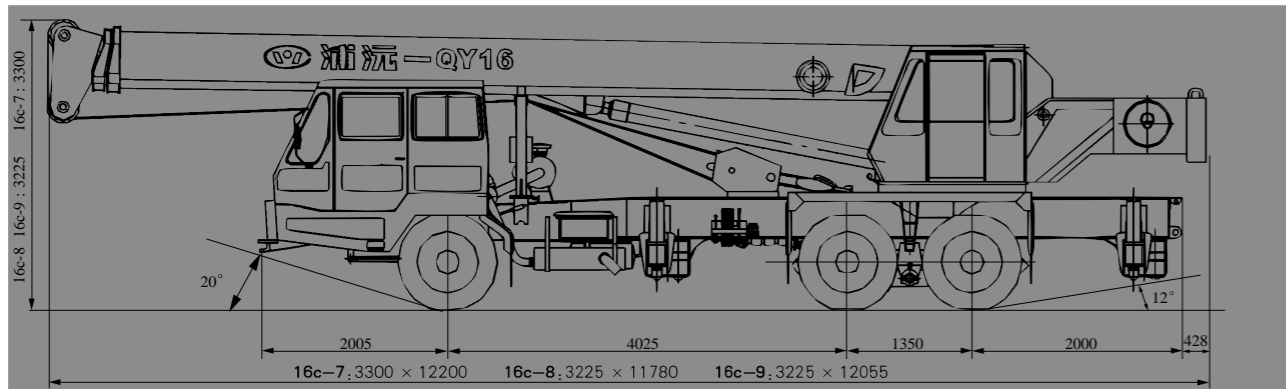
The main structures of the boom, outriggers etc, are all made of high strength steel, which is sturdy and durable. The hexagonal three-section boom can telescope synchronously which is convenient for operation and reasonable for load.

操纵室视野开阔，座椅舒适，配有电扇，空调装置（选用）等，为工作人员提供了舒适的环境。

The operator's cab with wide observing vision and a comfortable seat, is equipped with fan and air conditioner (optional), and which makes the comfortable environment for the operator.

装有力矩限制器（选用）、过卷安全装置、过放安全装置、溢流阀、平衡阀、液压锁、缓冲阀等安全装置，操作方便，安全可靠。

It is equipped with the safety devices, such as moment limiter (optional), overhoisting cut off device, over-winding cut off device, relief valve, balance valve, hydraulic lock, damping valve, to make the operation convenient, safety and reliable.



外形尺寸图 OVERALL DIMENSIONS

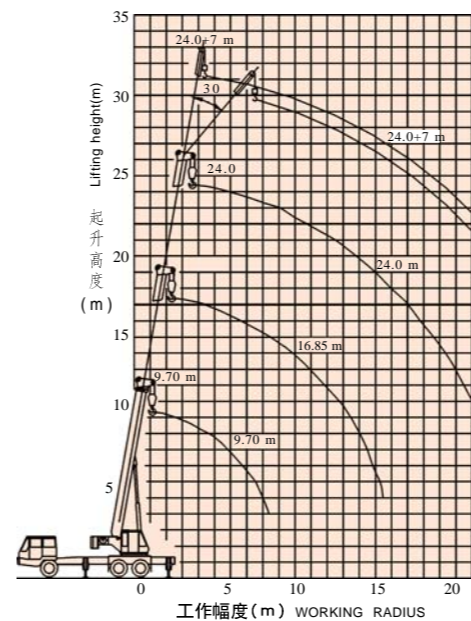
主要技术参数

Main technical specifications

项目(ITEM)	单位(UNIT)	数值(DATA)	
工作性能参数 WORKING PERFORMANCE SPECIFICATIONS	最大额定总起重量 MAX. RATED LIFTING CAPACITY	kg	16000
	基本臂最大起重力矩 MAX. LIFTING MOMENT WITH MIN. BOOM LENGTH	kN.m	748
	最长主臂最大起重力矩 MAX. LIFTING MOMENT WITH MAX. BOOM LENGTH	kN.m	425
	主臂最大起升高度 BOOM MAX. LIFTING HEIGHT	m	24.5
	副臂最大起升高度 JIB MAX. LIFTING HEIGHT	m	31
工作速度 WORKING SPEED	单绳最大速度 SINGLE LINE MAX. SPEED	m/min	120
	起重臂伸出时间 LIFTING BOOM EXTENDING TIME	s	58
	起重臂起臂时间 LIFTING BOOM ELEVATING TIME	s	53
	回转速度 SLEWING SPEED	r/min	0-2.5
行驶参数 TRAVELLING SPECIFICATIONS	最高行驶速度 MAX. TRAVELLING SPEED	km/h	69
	最大爬坡度 MAX. GRADEABILITY	%	25
	最小转弯半径 MIN. TURNING RADIUS	m	10.5
	最小离地间隙 MIN. CLEARANCE	m	0.21
	接近角 APPROACH ANGLE	°	20
	离去角 ANGLE OF DEPARTURE	°	12
	自由加速烟度排放限值 ACCELERATE FREELY DUST DISPLACEMENT	FSN	≤ 2.5
	百公里油耗 OIL CONSUMPTION PER. 100 KILOMETERS	L	≤ 40
质量参数 MASS SPECIFICATIONS	行驶状态自重(总质量) SELF-WEIGHT IN TRAVELLING CONDITION	kg	21300 21200 21000
	前轴轴荷 FRONT AXLE LOAD	kg	6300 6300 6300
	后轴轴荷 REAR AXLE LOAD	kg	16000 14900 14500
尺寸参数 DIMENSION SPECIFICATIONS	外形尺寸(长×宽×高) OVERALL DIMENSIONS (L×W×H)	mm	11780×2500×3225
	支腿纵向跨距 OUTRIGGER LONGITUDINAL SPAN	m	4.7
	支腿横向跨距 OUTRIGGER TRANSVERSAL SPAN	m	5.4
	主臂长 BOOM LENGTH	m	9.7-24
	主臂仰角 BOOM ANGLE	°	-3-80
	副臂长 JIB LENGTH	m	7
底盘 CHASSIS	型号 TYPE		PY5250
	发动机型号 ENGINE MODEL		欧II D6114 WD415.21(可选)
	发动机功率 MAX. POWER OF ENGINE	kW/rpm	158/2200 155/2200
	最大扭矩 MAX. TORQUE OF ENGINE	N.m/rpm	790/1400 820/1300-1600

起升高度曲线图

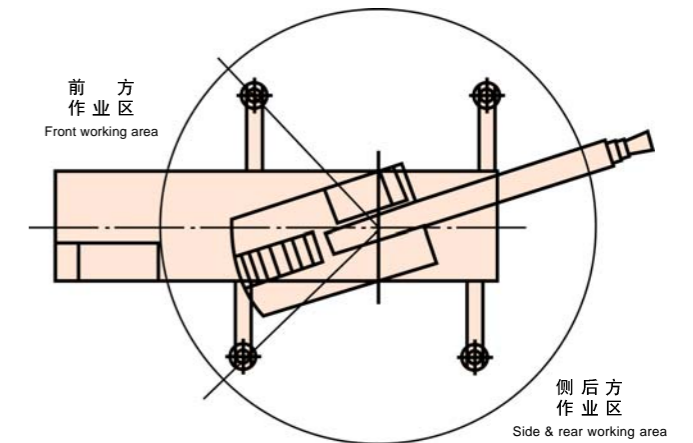
LIFTING HEIGHT CURVE DIAGRAM



钢丝绳倍率

WIRE ROPE FALL

臂长BOOM LENGTH(m)	9.7-16.85	16.85-20.4	20.4-24
倍率FALLS	7	5	3



起重作业方位图

WORKING AREA DIAGRAM