

以心换新 力无止境

USE OUR HEARTS TO GAIN NEW IDEA, THRER WILL BE ENDLESS OF POWER

起重特性表

RATED LIFTING CAPACITY TABLE

(装第五支腿) 单位(UNIT): kg

工作幅度 WORKING RADIUS(m)	主 臂 BOOM					主臂仰角 BOOM ANGLE (°)	主臂+副臂 BOOM+JIB 25.5+7.335m						
	支腿全伸		全方位作业				0°		15°		30°		
	ALL WORKING AREAS WITH OUTRIGGER FULLY EXTENDED						侧后方 REAR& SIDE	前方 OVER FRONT	侧后方 REAR& SIDE	前方 OVER FRONT	侧后方 REAR& SIDE	前方 OVER FRONT	
	102m	156m	21.1m	266m	320m								
3.0	25000					80	3000	3000	2400	2400	1500	1500	
3.5	25000	14600				78	3000	3000	2300	2400	1500	1500	
4.0	23400	14600	10000			76	2950	2950	2200	2200	1450	1450	
4.5	20500	14600	10000	8000		74	2800	2800	2100	2100	1400	1400	
5.0	18000	14600	10000	8000		72	2700	2700	2050	2050	1350	1350	
5.5	16600	14000	10000	8000	6500	70	2550	2500	2000	2000	1300	1300	
6.0	15500	13500	10000	8000	6500	68	2450	2200	1900	1900	1250	1250	
7.0	12000	12200	9000	8000	6500	66	2350	1900	1800	1700	1230	1230	
8.0	9500	9700	8000	7500	6000	64	2200	1600	1750	1500	1200	1200	
9.0	7500	7550	7500	7000	5500	62	2100	1400	1650	1250	1180	1180	
10.0		6150	6500	6000	5000	60	2000	1200	1600	1100	1150	1000	
11.0		5500	5800	5500	4700	58	1800	1000	1550	900	1130	850	
12.0		4250	4500	5000	4300	56	1600	800	1450	750	1110	700	
13.0			4000	4250	4000	54	1450	700	1400	650	1080	600	
14.0			3500	3750	3700	52	1300	550	1250	550	1050	500	
15.0			3000	3250	3500	50	1200	450	1100	400	1030	400	
16.0			2500	2750	3000	45	900	250	850	200	800	200	
18.0			2000	2250	2500	40	650		650		600		
20.0				1700	1900	35	500		500		450		
22.0				1250	1500	30	350		350		300		
24.0					1000								
26.0					800								
28.0					600								
30.0					400								

说明:

- 表中粗线以内数值为起重机强度所决定,粗线以外为起重机整机稳定所决定;
- 以上作业工况为支腿全伸,不允许在不打支腿的情况下吊重;
- 表中所给工作幅度,是指吊载后吊钩中心到回转中心的水平距离;
- 表中额定起重重量包括吊钩重,(主吊钩重290kg,副吊钩重80kg);
- 当实际臂长和工作幅度在两数值之间时,应按较大臂长和幅度值确定起重重量;
- 在副臂伸出的情况下使用主臂作业时,额定起重重量不仅要扣除吊具的重量,还要扣除副臂自重2000kg;
- 吊钩的最小倍率(钢丝绳根数)应在单根钢丝绳的起重重量不超过3100kg的范围加以决定,副臂的倍率为1。

NOTE:

- Capacity above the thick line in the table are based on the strength of the boom,the others,on the stability of the crane.Figures listed in the table are all maximum permissible values.Do not exceed them.
- Lifting without outriggers is not permissible.Capacity listed in the table is on the condition that crane is levelled on a firm ground.
- A working radius in the table is a horizontal distance from the centerline of the hookblock to the axis of the slewing ring when a load is lifted.
- Capacities given in the table include the weight of the hookblocks 290kg main hookblock and 80kg auxiliary hookblock).
- When actual boom length is between two values, determine lifting capacity according to bigger boom and radius.
- Rated lifting capacity should exclude the weight of clings and 2000kg,when the boom is used with jib extended.
- The min fall (the number of wire rope) should be determined when the lifting capacity of single wire rope doesn't exceed 3100kg. The fall of jib is 1.

中联重科浦沅分公司

地址:湖南省长沙市芙蓉中路三段613号
电话:0731-5667210
传真:0731-5682657
邮编:410007
网址:www.puyuan.com.cn

PUYUAN SUB-COMPANY OF ZOOMLION

HOLDING GROUP
ADD: NO.613 THE 3TH DISTRICT FURONG MIDDLE ROAD,
CHANGSHA, HUNAN
TEL: 0731-5667210
FAX: 0731-5682657
PC: 410007
HTTP://WWW.PUYUAN.COM.CN

营销部

销售热线:0731-5667230 5311766
服务热线:0731-5667004 8008786119
备件服务热线:0731-5667276
传真:0731-5585850
E-mail:sales@puyuan.com.cn

SALES DEPARTMENT

TEL:0731-5667230 5311766
SERVICE TEL:0731-5667004
SPARE PARTS SALE:8008786119 0731-5667276
FAX:0731-5585850
E-mail:sales@puyuan.com.cn

浦沅进出口有限公司

总部电话:0731-5667238
传真:0731-5591796
E-mail:pyiec@public.cs.hn.cn

CHANGSHA PUYUAN IMP. & EXP. CO., LTD.

HEAD OFFICE: 0731-5667238
FAX: 0731-5591796
E-mail: export@puyuan.com.cn

2006年1月版

PUYUAN

■ 全液压汽车起重机

Full Hydraulic Truck Crane

■ QY25H-5



浦沅

注意: 样本所载的图片和技术参数, 由于设计上改进等原因, 有可能与用户交货产品不符, 请予理解, 恕不另行通知。
NOTICE: PICTURES AND TECHNICAL DATA SUBJECT TO CHANGE WITHOUT NOTICE FOR IMPROVEMENT.

QY25H-5



主要特点 MAIN FEATURES

浦沅牌 QY25H(ZLJ5290JQZ25H)型汽车起重机是全回转伸缩臂式液压汽车起重机, 采用杭发 WD615.58 环保发动机, 马力强劲, 油耗低, 噪音小, 排放符合国家标准要求。

PUYUAN QY25H (ZLJ5290JQZ25H) truck crane is a type of hydraulic truck crane. It adopts Hang Fa WD615.58 environmental friendly protection engine with high horsepower, low oil consumption, low noise, emission accords with the requirements of national standard.

采用现代流线型风格的全驾驶室和操纵室, 驾驶室内全覆盖软化内饰, 配豪华仪表工作台、液压减震座椅, 空调、暖风等, 驾驶室宽敞舒适、上下方便, 实现了人机完美结合。

The full-width mounted driver's cab and the operator's cab are streamline style. The driver's cab is equipped with soft decoration materials, luxury gauge, comfortable seat with hydraulic shock absorbing seats, air-conditioner and heater to provide the driver a comfortable environment and realize man and machine intergration.

上车操纵室前窗安装弧面玻璃, 顶部、后部及两侧均配有视窗, 视野开阔。

The full vision operator's cab is equipped with bowtype glass in front, windows on top, rear and two sides.

全覆盖走台板, 外型美观, 便于检测与维修。

The full covered deck with elegant appearance makes checking and maintenance convenient.

六边形四节主臂, 强度高, 受力合理, 吊重稳定性好。装有第五支腿, 伸出第五支腿时, 可使起重机360°全方位作业。

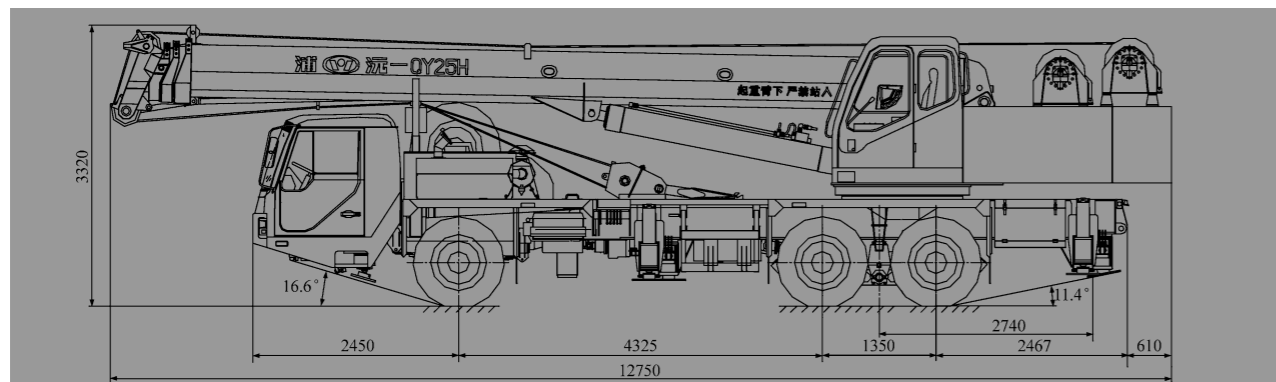
The hexagonal four-section boom is high strength and high stability. With the fifth outrigger, the lifting work can be done in 360° range.

卷扬、回转机构关键件均采用力士乐产品, 主液压阀件采用集成化模块设计, 液压损失小, 故障率低, 确保作业稳定可靠。

The main components of hoist system and slewing system are all the products of Rexroth. The main hydraulic valve is designed with intergration module style with the features of low rate of malfunction.

配有力矩限制器、过卷、过放等安全装置, 操作方便, 安全可靠。

It is equipped with the safety devices, such as moment limiter, over-winding cut off device, over-lowering cut off device etc., to make the operation convenient, safe and reliable.



外形尺寸图 OVERALL DIMENSIONS

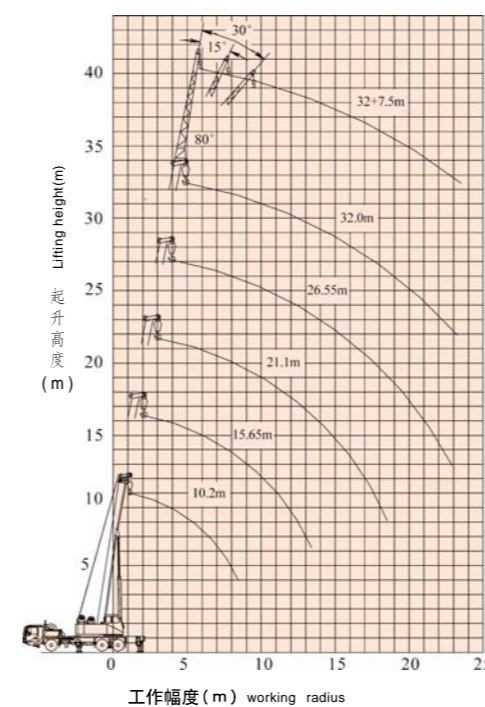
主要技术参数

Main technical specifications

项目(ITEM)	单位(UNIT)	数值(DATA)	
工作性能参数 WORKING PERFORMANCE SPECIFICATIONS	最大额定总起重量 MAX. RATED LIFTING CAPACITY	kg	25000
	基本臂最大起重力矩 MAX. LIFTING MOMENT WITH MIN. BOOM LENGTH	kN.m	918
	最长主臂最大起重力矩 MAX. LIFTING MOMENT WITH MAX. BOOM LENGTH	kN.m	510.12
	主臂最大起升高度 BOOM MAX. LIFTING HEIGHT	m	32.5
	副臂最大起升高度 JIB MAX. LIFTING HEIGHT	m	40.3
工作速度 WORKING SPEED	单绳最大速度 SINGLE LINE MAX. SPEED	m/min	115
	起重臂伸出时间 LIFTING BOOM EXTENDING TIME	s	122
	起重臂起臂时间 LIFTING BOOM ELEVATING TIME	s	79
	回转速度 SLEWING SPEED	r/min	0-2.4
行驶参数 TRAVELLING SPECIFICATIONS	最高行驶速度 MAX. TRAVELLING SPEED	km/h	70
	最大爬坡度 MAX. GRADEABILITY	%	24
	最小转弯半径 MIN. TURNING RADIUS	m	10
	最小离地间隙 MIN. CLEARANCE	m	0.22
	接近角 APPROACH ANGLE	°	16.6
	离去角 ANGLE OF DEPARTURE	°	11.4
	自由加速烟度排放限值 ACCELERATE FREELY DUST DISPLACEMENT	符合 GB3847-1999	GB17691-2001 的规定
质量参数 MASS SPECIFICATIONS	行驶状态自重(总质量) SELF-WEIGHT IN TRAVELLING CONDITION	kg	29500
	前轴轴荷 FRONT AXLE LOAD	kg	7000
	后轴轴荷 REAR AXLE LOAD	kg	23300
尺寸参数 DIMENSION SPECIFICATIONS	外形尺寸(长×宽×高) OVERALL DIMENSIONS (L×W×H)	mm	12750×2500×3320
	支腿纵向跨距 OUTRIGGER LONGITUDINAL SPAN	m	5.36
	支腿横向跨距 OUTRIGGER TRANSVERSAL SPAN	m	5.9
	主臂长 BOOM LENGTH	m	10.2-32.0
	主臂仰角 BOOM ANGLE	°	-3-80
	副臂长 JIB LENGTH	m	7.5
底盘 CHASSIS	型号 TYPE		ZLJ5312
	发动机型号 ENGINE MODEL		杭发 WD615.58
	发动机功率 MAX. POWER OF ENGINE	kW/rpm	175/2200
	最大扭矩 MAX. TORQUE OF ENGINE	N.m/rpm	1000/1300-1600

起升高度曲线图

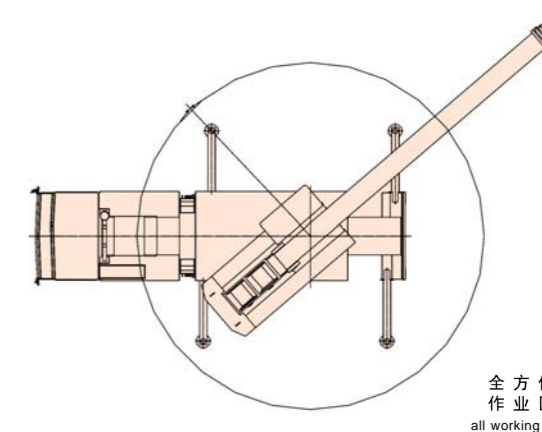
LIFTING HEIGHT CURVE DIAGRAM



钢丝绳倍率

WIRE ROPE FALL

臂长 BOOM LENGTH(m)	10.2-15.65	15.65-21.1	21.1-26.65	26.65-32
倍率 FALLS	8	5	4	3



全方位
作业区
all working area

起重作业方位图

WORKING AREA DIAGRAM