

# 以心换新 力无止境

USE OUR HEARTS TO GAIN NEW IDEA, THRER WILL BE ENDLESS OF POWER

## 起重特性表

RATED LIFTING CAPACITY TABLE

单位(UNIT): kg

工作幅度 WORKING RADIUS(m)	主 臂 BOOM					主 臂 仰 角 BOOM ANGLE (°)	主臂+副臂 BOOM+JIB			
	支腿全伸、后方、侧方作业 REAR & SIDE WORKING AREA WITH OUTRIGGER FULLY EXTENDED						40.2+9m		40.2+15m	
	臂 长 BOOM LENGTH						副臂安装角 JIB OFFSET		副臂安装角 JIB OFFSET	
	10.8m	18.15m	25.5m	32.85m	40.2m		0°	30°	0°	30°
3.0	6000	31000								
3.5	50500	31000				80	4000	2150	2400	1000
4.0	43500	30000	21000			78	3800	2050	2180	1000
4.5	40000	28000	20000			76	3500	1950	1920	1000
5.0	36000	27000	19200	13800		74	3150	1900	1820	1000
5.5	31000	24600	19000	13800		72	2850	1850	1690	1000
6.0	25600	23200	18200	13800		70	2700	1800	1530	1000
6.5	22000	21000	17500	13600		68	2550	1750	1380	900
7.0	20000	19400	17100	13600	8500	66	2450	1650	1230	800
8.0	15500	15300	15800	12600	8500	64	2150	1400	1080	700
9.0	12100	11700	13000	11600	8200	62	1850	1150	950	600
10.0		9500	10800	10600	7800	60	1550	1000	830	
11.0		7500	8800	9200	7400	58	1350	850	700	
12.0		6500	7200	8200	7000	56	1100	700	600	
13.0		5300	6000	7000	6600	54	950	550		
14.0		4600	5200	6200	6200	52	750			
15.0		3700	4300	5200	5300	50				
16.0		3000	4000	4800	5000					
18.0			3000	3800	4000					
20.0			2100	3000	3200					
22.0			1600	2300	2600					
24.0				1800	2100					
26.0				1400	1600					
28.0					1200					

说明:

- 表中的额定总起重量是起重机设置在坚固地面呈水平状态下的允许起吊重量, 不允许在不打支腿的情况下吊重;
- 表中所列数值为包括吊具在内的最大允许值 (50吨主钩重 505 千克, 副吊钩重量 120 千克);
- 表中黑线框以内的额定总起重量由起重机的结构强度所决定, 其它由起重机整机稳定性而确定;
- 使用臂端滑轮时, 最大起重量不得超过单根钢丝绳允许起吊载荷 4.2 吨。
- 打好第五支腿时, 表中数值适用于圆周 360° 作业。

NOTE:

- Lifting capacities shown in the table are based on the condition that the crane is set on firm ground horizontally, lifting on the wheels is prohibited.
- Capacities listed in the table are max. permissible values including the slings (505kg main hookblock for 50t and 120kg auxiliary hoodblock).
- Rated lifting capacities in the thick line frame of the table are based on structure strength of the crane, the others, on stability.
- When the single top sheave is used, max. lifting capacity must not exceed a permissible load of 4.2t per single line.
- With the fifth outrigger fully extended, full 360° rotation is available according to the values listed in the above table, in front working besides side and front working.

# PUYUAN

## 全液压汽车起重机

Full Hydraulic Truck Crane

## QY50H



### 中联重科浦沅分公司

地址: 湖南省长沙市芙蓉中路三段 613 号  
电话: 0731-5667210  
传真: 0731-5582657  
邮编: 410007  
网址: www.puyuan.com.cn

PUYUAN SUB-COMPANY OF ZOOMLION  
HOLDING GROUP  
ADD: NO.613 THE 3TH DISTRICT FURONG MIDDLE ROAD,  
CHANGSHA, HUNAN  
TEL: 0731-5667210  
FAX: 0731-5582657  
PC: 410007  
HTTP://WWW.PUYUAN.COM.CN

### 营销部

销售热线: 0731-5667230 5311766  
服务热线: 0731-5667004  
备件服务热线: 8008786119 0731-5667276  
传真: 0731-5585850  
E-mail: sales@puyuan.com.cn

SALES DEPARTMENT  
TEL: 0731-5667230 5311766  
SERVICE TEL: 0731-5667004  
SPARE PARTS SALE: 8008786119 0731-5667276  
FAX: 0731-5585850  
E-mail: sales@puyuan.com.cn

### 浦沅进出口有限公司

总部电话: 0731-5667238  
传真: 0731-5591796  
E-mail: pyiec@public.cs.hn.cn

CHANGSHA PUYUAN IMP. & EXP. CO., LTD.  
HEAD OFFICE: 0731-5667238  
FAX: 0731-5591796  
E-mail: export@puyuan.com.cn

注意: 样本所截的图片和技术参数, 由于设计上改进等原因, 有可能与用户交货产品不符, 请予理解, 恕不另行通知。  
NOTICE: PICTURES AND TECHNICAL DATA SUBJECT TO CHANGE WITHOUT NOTICE FOR IMPROVEMENT.



## QY50H



### 主要特点 MAIN FEATURES

QY50H (ZLJ5410JQZ50H) 汽车起重机是全回转、伸缩臂式全液压汽车起重机，最大额定起重量为60吨，采用全驾自制专用底盘，8×4驱动，配斯太尔WD615.67A型环保发动机，动力强劲。

QY50H (ZLJ5410JQZ50H) truck crane is a full slewing hydraulic truck crane with telescoping boom. It has max-lifting capacity of 60t. It adopts full-width self-made special purpose chassis with 8×4 driven, and is equipped with Styre WD615.67A environment friendly engine with strong power.

采用现代流线型全驾驶室和操纵室，驾驶室内全覆盖软化内饰，配豪华仪表工作台，液压减震座椅、空调、暖风等，驾驶室宽敞舒适，上下方便，实现了人机完美结合。

The full mounted driver's cab and the operator's cab are streamline style. The driver's cab is equipped with soft decoration materials, luxury gauge, comfortable seat, an air heater (optional) with hydraulic reducer to provide the driver a comfortable environment and realize man and machine intergration.

上车操纵室前窗安装弧面玻璃，操纵室后部及两侧均配有视窗，视野开阔。配有空调、暖风，操作舒适、方便。

The full vision operator's cab is equipped with bowtype glass in front, windows on top, rear and two sides. It has an air-airconditioner and heater (optional) makes the operation comfortable and convenient.

具有世界先进水平的五节六边形吊臂，吊臂材料选用进口高强钢。支腿强度高，承载力强，吊重稳定性好。

The boom and outrigger adopt world first class high strength steel. All has strong bearing capacity and good lifting stability.

伸缩机构采用二节伸缩缸加两级同步伸缩形式，变幅机构采用两个前置式双作用油缸驱动，动作安全、平稳、可靠。

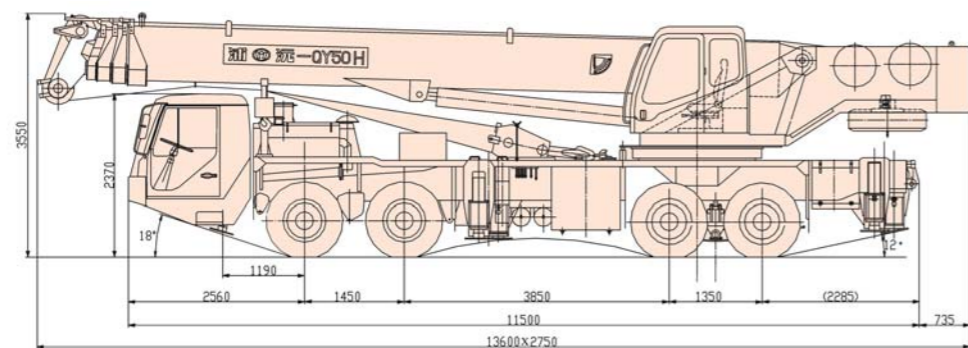
Telescoping mechanism adopts two-section cylinder telescoping simultaneously by two stages. Derricking mechanism is driven by two head double-action cylinders, the motion of which is safe, stable and reliable.

关键液压元件采用当今世界最先进的零部件产品，全套密封件进口，下车可双面操作，装有第五支腿，可在360°全方位作业。

Key hydraulic parts in the whole vehicle are imported or imported parts. Chassis can be controlled on left and right side of the vehicle. It is fitted with the 5th outrigger. Crane can be operated in 360° scope (all direction working areas) with the 5th outrigger extended.

配有力矩限制器、主臂仰角指示器、排绳器、过卷、过放等安全装置和齐全的照明装置，操作方便，安全可靠。

It is fitted with safety devices, such as moment limiter, boom angle indicator, clamping roller, overlowering device, overwinding device and complete illuminations which can make operation convenient, safe and reliable.



外形尺寸 OVERALL DIMENSIONS

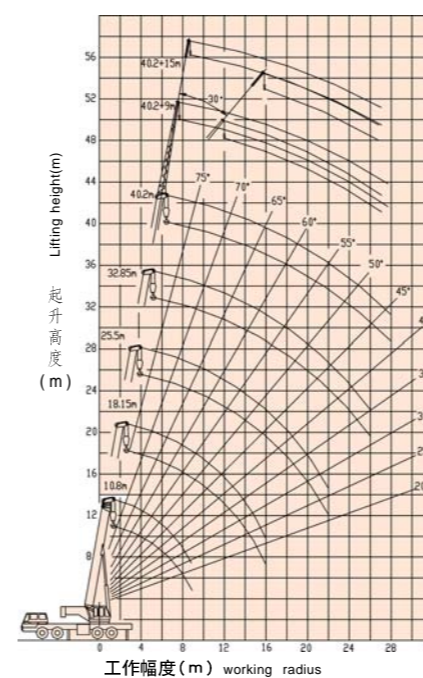
### 主要技术参数

### Main technical specifications

项 目(ITEM)	单 位(UNIT)	数 值(DATA)	
工作性能参数 WORKING PERFORMANCE SPECIFICATIONS	最大额定总起重量 MAX. RATED LIFTING CAPACITY	kg	60000
	基本臂最大起重力矩 MAX. LIFTING MOMENT WITH MIN. BOOM LENGTH	kN.m	1800
	最长主臂最大起重力矩 MAX. LIFTING MOMENT WITH MAX. BOOM LENGTH	kN.m	868
	主臂最大起升高度 BOOM MAX. LIFTING HEIGHT	m	40.2
	副臂最大起升高度 JIB MAX. LIFTING HEIGHT	m	56.5
工作速度 WORKING SPEED	单绳最大速度 SINGLE LINE MAX. SPEED	m/min	125
	起重臂伸出时间 LIFTING BOOM EXTENDING TIME	s	165
	起重臂升起时间 LIFTING BOOM ELEVATING TIME	s	95
	回转速度 SLEWING SPEED	r/min	0-2
行驶参数 TRAVELLING SPECIFICATIONS	最高行驶速度 MAX. TRAVELLING SPEED	km/h	66
	最大爬坡度 MAX. GRADEABILITY	%	30
	最小转弯半径 MIN. TURNING RADIUS	m	11.5
	最小离地间隙 MIN. CLEARANCE	m	0.24
	接近角 APPROACH ANGLE	°	18
	离去角 ANGLE OF DEPARTURE	°	12
	自由加速烟度排放限值 ACCELERATE FREELY DUST DISPLACEMENT	FSN	≤ 2.5
质量参数 MASS SPECIFICATIONS	百公里油耗 OIL CONSUMPTION PER. 100 KILOMETERS	L	50
	行驶状态自重(总质量) SELF-WEIGHT IN TRAVELLING CONDITION	kg	41000
	前轴轴荷 FRONT AXLE LOAD	kg	15000
尺寸参数 DIMENSION SPECIFICATIONS	后轴轴荷 REAR AXLE LOAD	kg	26000
	外形尺寸(长×宽×高) OVERALL DIMENSIONS (L×W×H)	mm	13600×2750×3550
	支腿纵向跨距 OUTRIGGER LONGITUDINAL SPAN	m	5.75
	支腿横向跨距 OUTRIGGER TRANSVERSAL SPAN	m	6.70
	主臂长 BOOM LENGTH	m	10.8-40.2
	主臂仰角 BOOM ANGLE	°	-2-80
底 盘 CHASSIS	副臂长 JIB LENGTH	m	15
	型号 TYPE		ZLJ5410
	发动机型号 ENGINE MODEL		STYRE WD615.67A
	发动机功率 MAX. POWER OF ENGINE	kW/rpm	206/2200
	最大扭矩 MAX. TORQUE OF ENGINE	N.m/rpm	1160/1300-1600

### 起升高度曲线图

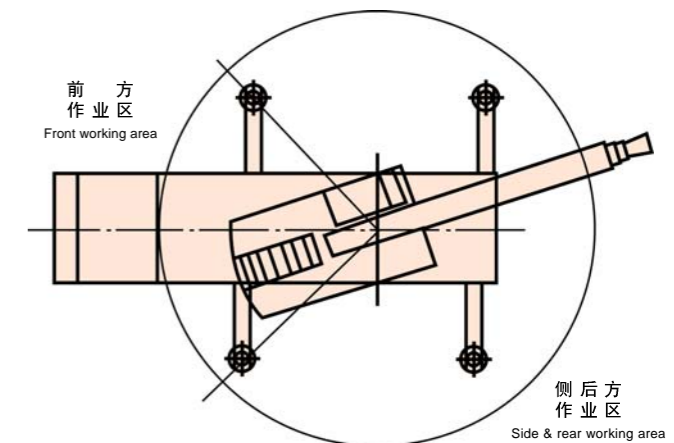
#### LIFTING HEIGHT CURVE DIAGRAM



### 钢丝绳倍率

#### WIRE ROPE FALL

臂长BOOM LENGTH(m)	10.8-18.15	18.15-25.5	25.5-32.85	32.85-40.2
倍率FALLS	12	8	6	4



### 起重作业方位图

#### WORKING AREA DIAGRAM